



Connecting and Presenting with the Present Pal for Google Slides Add-on

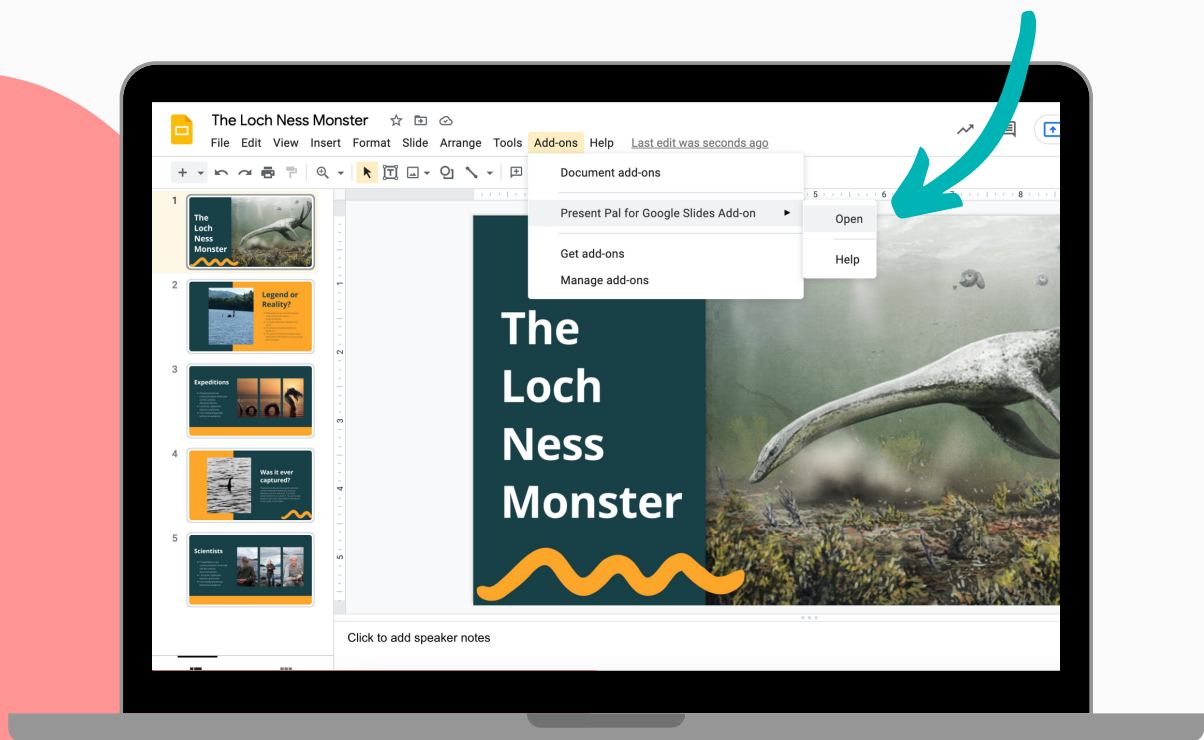
In this guide, you will learn how to connect the Present Pal for Google Slides Add-on with your smartphone or tablet to control your slides and present seamlessly.

1

Open **Google Slides** and select any presentation OR create a new blank presentation.

2

Open the Present Pal Add-on by clicking on '**Add-ons**', then clicking on '**Present Pal for Google Slides Add-on**', then selecting '**Open**'.



Connecting and Presenting with the Present Pal for Google Slides Add-on



Attention!

In order to enable slide control, you **must** have the **Present Pal Extension** installed in addition to the Present Pal for Google Slides Add-on. Please ensure the extension is installed before proceeding.

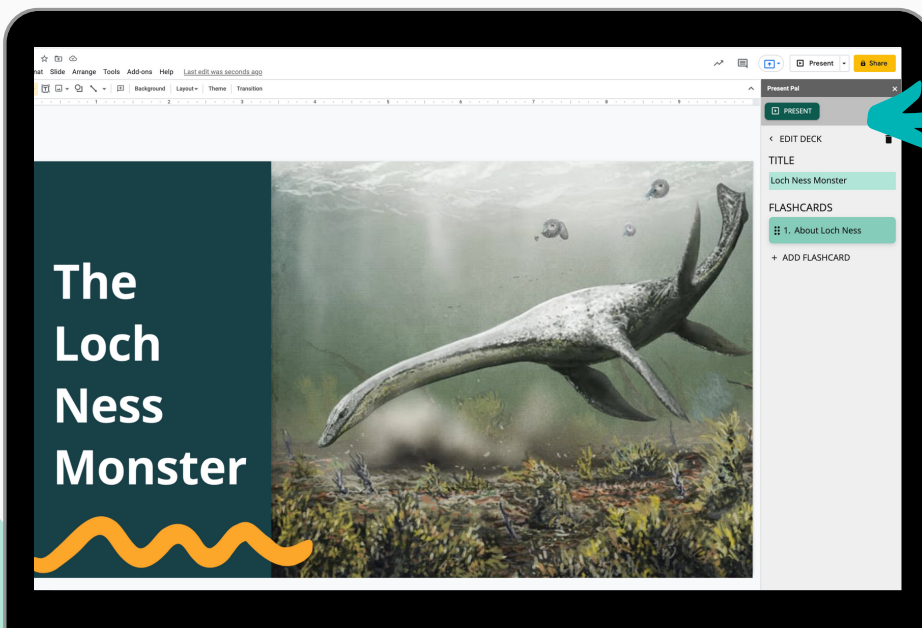
3

Log in to the Present Pal add-on using your login credentials. Then, select and open the deck of flashcards you would like to present with.

4

Tap the **'Present'** button. Your presentation will open in a new browser tab in **presentation mode**.

 PRESENT





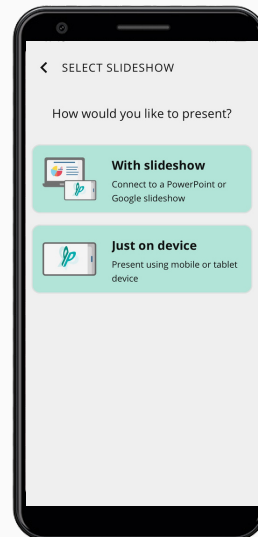
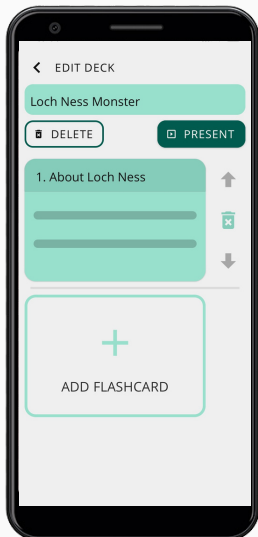
Connecting and Presenting with the Present Pal for Google Slides Add-on

5

Log in to your Present Pal app on your smartphone or tablet device and select the same deck that you wish to present.

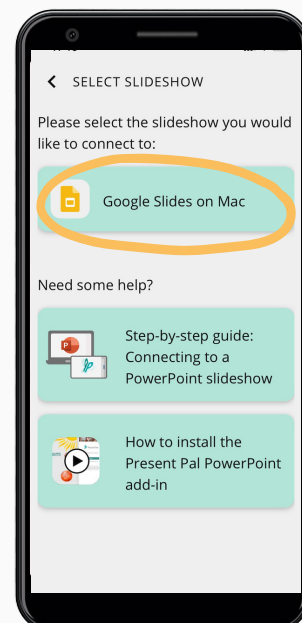
6

Click '**Present**' then select '**With Sideshow**'

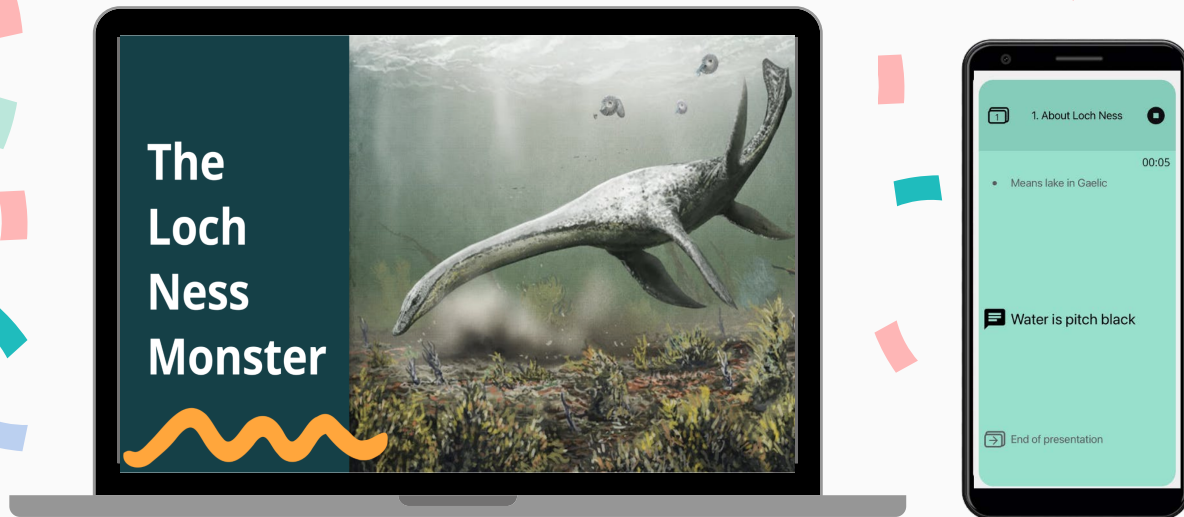


7

Connect your devices by tapping on '**Google Slides on Mac or PC**'.



Congratulations!
Your presentation devices are now connected!



Say goodbye to manually changing slides 🙌

Your slides will now change automatically as you progress through your synced flashcards, letting you focus on communicating confidently!

Other Resources



Having Trouble?
Read our FAQ's or contact our team.

Get Support



Prefer video tutorials?
Jump over to our **YouTube channel** for video tutorials!

Watch Now